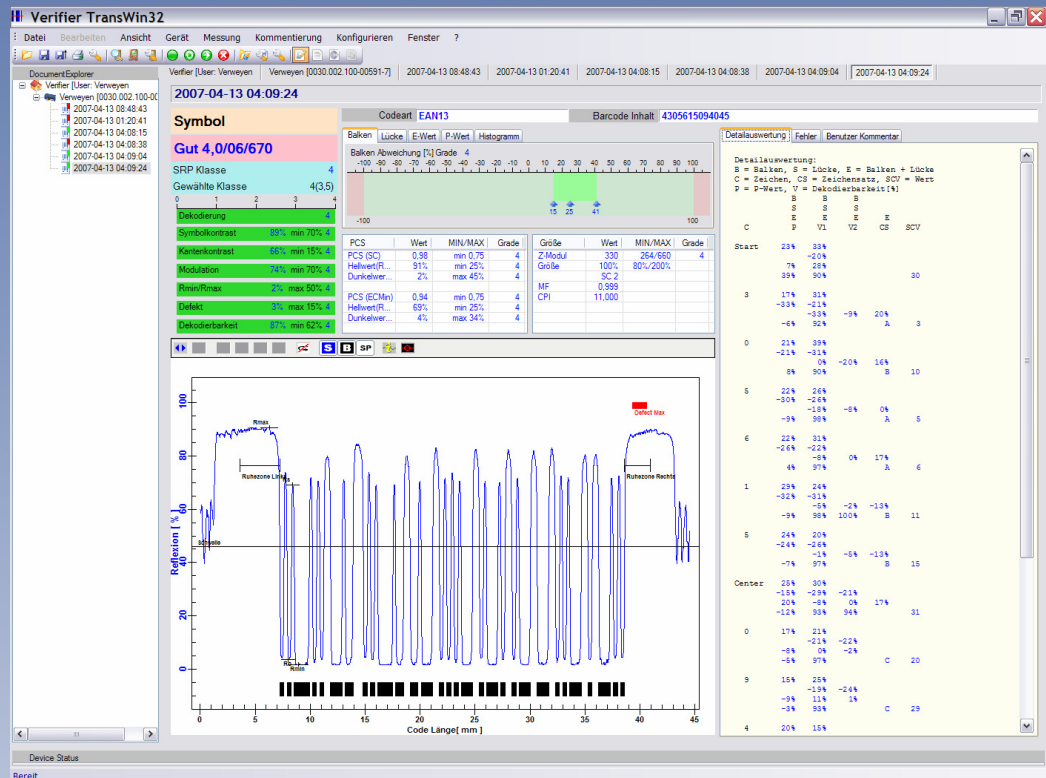


# REA TransWin 32

Bar code quality control in one view  
without missing the details



Evaluations of bar codes according to ISO/IEC 15416 standards

Optional parameters for bar code size and print process control

Full remote control of REA PC-Scan and the REA ScanCheck 3

Report view for REA ScanCheck, REA ScanCheck II, REA Check 3

Evaluations according to GS1 specifications and GS1 report view

# REA TransWin 32

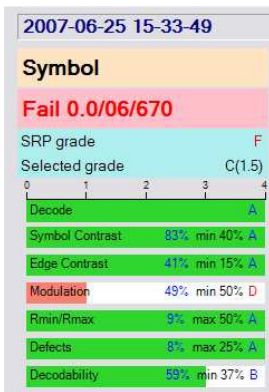
Bar code quality control according to international standards is essential to keep efficiency of logistic processes at high level. Bar code quality agreements are important in a customer and supplier relationship. REA verifiers are used world-wide for bar code quality control.

The new PC-Software REA TransWin 32 is a step ahead in methodology and representation of verification results. Additionally management of reports is more powerful than ever.

REA TransWin 32 allows connecting to several REA barcode verifiers at the same time either via USB interfaces or serial ports. The latest models are completely remote controlled and allow a sophisticated graphical report view.

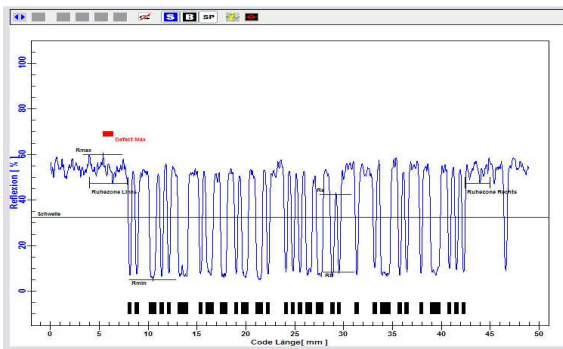
Configuration and reports are transferred by using TCP/IP protocols.

The compact result window gives in short the final verification result „Pass“ or „Fail“.

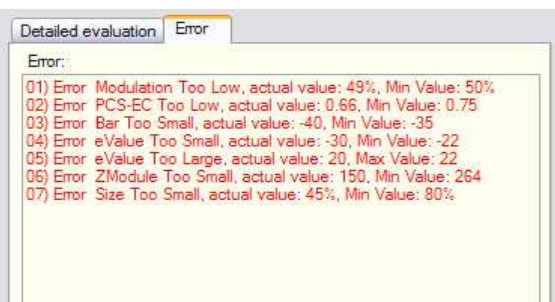


Details of reports are shown in clear graphical representations or in tables.

The scan reflectance profile window allows zooming and measuring of details. It shows how the bar code appears to a scanner.



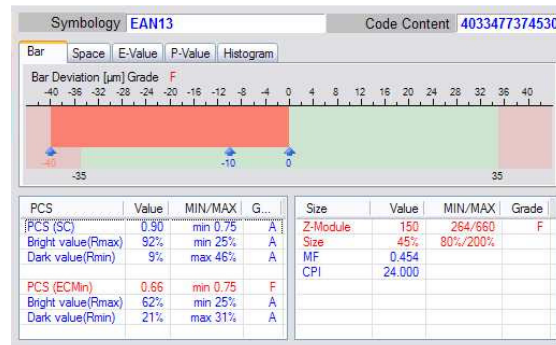
Parameters out of specification and errors are highlighted in red colour. This allows a fast check of inaccuracies and helps to analyze errors in the processes.



Verification reports can be completed by comments and user addresses. The reports will be organized hierarchically. Customers can open TransWin 32 reports without losing any information. Additionally external PDF software may be useful to create reports in PDF format.

## Features:

- Evaluation according to ISO/IEC 15416 or ANSI X3.182 and -upon request- with optional parameters in addition
- Support of GS1 General Specifications
- Classical PCS measurements can be taken into account as graded optional parameter or as view only parameter
- Auto discrimination of all main bar code symbologies
- Averaging of up to 10 measurements. If required, not decoded measurements can be taken into account.
- Extended light margin control through wide area scan reflectance profile view
- Wide to narrow bar width ratio control for two bar widths bar codes
- Program password protected
- Multi language user interface
- Comments and measurement numbers can be added to reports
- Reports can be saved by using an automatic file name generator or by individual user selected file names.
- Reports can be shown and printed in the GS1 layout
- 32 bit software for modern MS@WINDOWS-operating systems
- Fast TCP/IP data communication via USB interface



**REA** Elektronik GmbH

Teichwiesenstraße 1  
D-64367 Mühltal, Germany  
Ph.: +49 (0) 6154 / 638-0  
Fax: +49 (0) 06154 / 638-195  
E-Mail: reinfo@rea.de  
Web: www.rea-verifier.com

## Technical Data

- 32 bit –Software for Microsoft Windows  
Microsoft® Windows 2000®, XP®, VISTA®
- Functionality for REA PC-Scan and REA ScanCheck 3:  
Upload, saving and printing of evaluation reports  
Graphical and GS1 report view  
Detailed text report view  
Extended reflectance profile view  
REA verifier setup and remote control
- Functionality for REA ScanCheck, REA ScanCheck II and REA Check 3:  
(Firmware update required)  
Upload, saving and printing of evaluation reports  
Text view of reports
- Bar code symbologies:  
EAN-13, UPC-A, UPC-E with/ without ADD-ON, EAN-8, 2/5 Interleaved with /without check digit, ITF-14, Code 39 with/without check digit, PZN, Code 32, Code 128, Code 128 DHL, Code 128 DPD, GS1-128 with/without check of content, GS1-128 DHL  
new: GS1-Databar
- Optional: 2/5 3 Bars, 2/5 5 Bars, 2/5 IATA, 2/5 Baggage, 2/5 DHL Express, Code39 Full ASCII, Code93, MSI, Plessey, Code128UPU, Code39UPU, Code39HIBC, Code128HIBC, Codabar Monarch (18), LAETUS Pharma code, LAETUS Mini Pharma Code
- System requirements  
Hardware:  
CPU 1.5GHz , 1GB RAM  
Minimum hard disk capacity: 500MB free space  
Display:  
1 colour display with minimum. 800x600 pixels, rec. : 1280 x 1024 pixels  
Colour graphics adaptor according requirements of display  
Removable memory  
1 CD-ROM- or DVD-drive  
Interfaces:  
1 USB 1.1 port for REA ScanCheck 3 required  
1 serial interface for REA PC-Scan required or 1 USB to serial converter cable
- System requirements  
Software:  
Operating system:  
Microsoft®  
Windows 2000 or Windows XP® or Windows VISTA®  
.NET Framework, version 2.0
- Internet-Browser:  
min. Microsoft®  
Internet Explorer IE 6.0

Product names, logos, brands, and other trademarks featured or referred to within this brochure are the property of their respective trademark holders. REA uses these Product names, logos, brands or other trademarks for informational purposes only without claiming any rights to them.

Technical alterations are subject to change without further notice.